

# Toyota Motor Miyata Plant

Fukuoka Prefecture, Japan

**BarChip Inc.**  
The Synthetic Fibre Experts

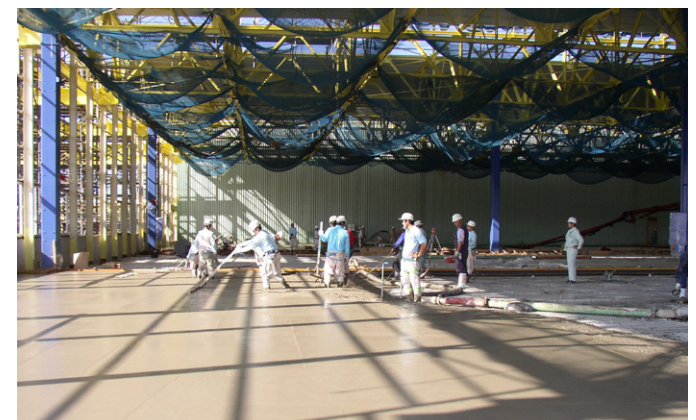


BarChip macro synthetic fibre reinforcement was used in the industrial flooring works associated with the expansion of the Toyota Motor Kyushu manufacturing facility in Fukuoka, Japan during the early 2000s.

Toyota Motor Kyushu's Miyata Plant is one of Toyota's major vehicle manufacturing facilities in Japan, originally constructed on a site of approximately 149 hectares with a total building area of more than 250,000m<sup>2</sup>. During the early 2000s, the facility underwent significant expansion works to support increased Lexus production capacity, including the completion of a second production line in 2005.

BarChip fibre reinforcement was used as an alternative to conventional steel reinforcement in large industrial floor slabs throughout the expansion works. By eliminating the need for traditional steel mesh placement, the project benefited from reduced labour requirements, simplified construction sequencing and faster slab installation within an active manufacturing environment.

More than 20 years later, the facility continues to operate as one of Toyota's key Lexus production centres, demonstrating the long-term durability and performance of fibre reinforced concrete in demanding industrial applications.



## BarChip Inc.

info@barchip.com

Australia: +61 1300 131 158

N. America: +1 704 843 8401

EMEA: +353 (0) 1 469 3197

Asia: +65 6835 7716

S. America: +56 2 2703 1563

Brazil: +55 19 2121 5417



**EPD**<sup>®</sup>  
Australasia  
ENVIRONMENTAL PRODUCT DECLARATION

**BarChip Inc.**

The Synthetic Fibre Experts

Distributors are located in other regions. For contact details visit [www.barchip.com](http://www.barchip.com).

Disclaimer: This information has been provided as a guide to performance only, for specific and supervised conditions. The user is advised to undertake their own evaluation and use the services of professionals to determine the product suitability for any particular project or application prior to commercial use. ISO 9001:2015. Toyota\_1. © BarChip Inc. 2026.

[www.barchip.com](http://www.barchip.com)